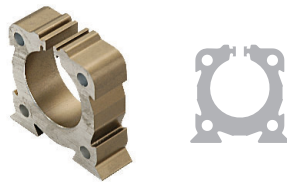
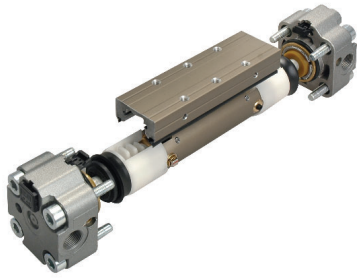


1

Cilindros sem haste

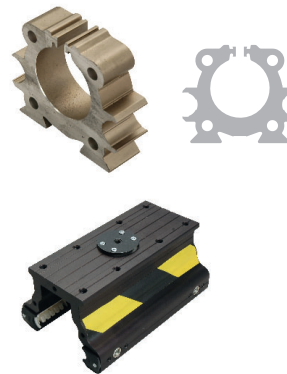
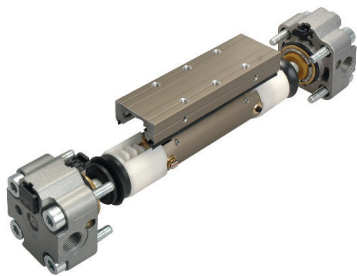
■ S1

Cilindros sem haste $\varnothing 16 \div 50$ mm



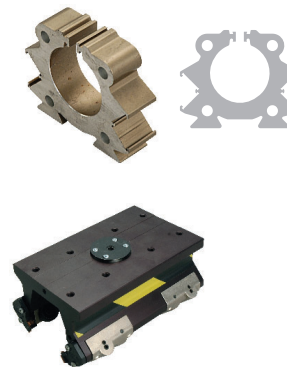
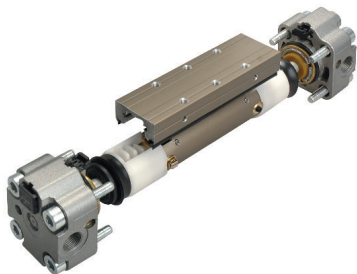
■ S5

Cilindros sem haste com guias integradas e patim em tecnopolímero $\varnothing 25 \div 50$ mm



■ VL1

Cilindros sem haste com guias integradas a 90° com rolamentos de esferas $\varnothing 25 \div 50$ mm



Em caso de solicitação entrar em contato com nosso Departamento Comercial